

KWS SISKIN

Winter Wheat

KWS Sterling x CPBT W134



SEEDING
THE FUTURE
SINCE 1856



There's no wheat that's more dynamic!

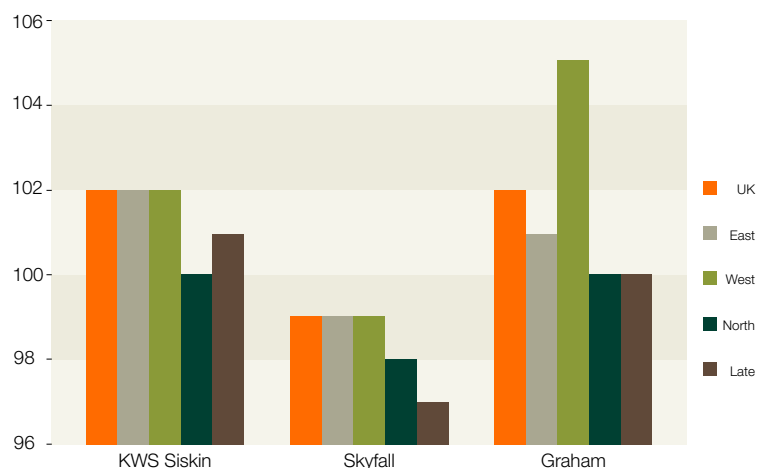
**DYNAMIC
WHEATS**

- Highest yielding breadmaking wheat
- Superb physical grain quality
- Vigorous growth habit with wide sowing window

KWS Siskin is the highest yielding breadmaker on the Recommended List. Combining high yields, exceptional hagberg, strong protein (12.8% from milling trials) and its positive **ukp** status - KWS Siskin opens multiple end markets for farmers, unlocking premiums for their shed load of grain.

In addition it is consistent across soil types and performs well as both a first and second wheat. KWS Siskin has one of the best *Septoria tritici* scores of 6.7 on the List and scores high for mildew and yellow rust, thus highlighting the disease profile farmers can expect from KWS Dynamic Wheats.

UK Yield (% Controls)



	KWS Siskin	Skyfall	Graham
Yield (% treated controls)			
UK	102	99	102
East	102	99	101
West	102	99	105
North	100	98	100
Disease			
Mildew	8	5	7
Yellow Rust	9	5	8
Brown Rust	5	8	6
S.nodorum	[7]	[6]	[6]
S.tritici	6.7	5.9	6.9
Eyespot*	4	6@	4
Fusarium	5	7	6
OWBM	-	R	-
Agronomy			
Lodging (+ PGR)	7	8	8
Lodging (- PGR)	6	8	7
Height (cm)	83	82	86
Ripening (+/- JB Diego)	+1	0	0
Sp.Wt (kg/hl)	77.5	78.6	76.9
Hagberg	300	293	283

Data sources: AHDB Recommended List, Winter Wheat 2019/20
*@ believed to carry Pch1 Rendezvous resistance gene to Eyespot

KWS UK Ltd, 56 Church Street, Thriplow, Royston, Herts, SG8 7RE

■ Tel: 01763 207300 ■ Fax: 01763 207310 ■ Email: info@kws.com ■ www.kws-uk.com