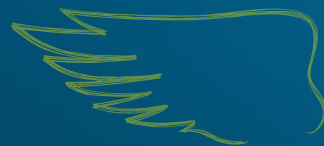




DK EXSTAR

Registration Year 2017, UK

THE STRONGEST COMBINATION OF YIELD AND AGRONOMY TRAITS EVER SEEN IN A WOSR VARIETY



VIGOROUS ESTABLISHMENT



DOUBLE PHOMA RESISTANCE



POD SHATTER RESISTANCE

PRODUCT CHARACTERISTICS

GROSS OUTPUT	105
OIL CONTENT	45.3
EARLINESS AT REGROWTH	MID
EARLINESS AT FLOWERING	1 2 3 4 5 6 7 8 9
EARLINESS AT MATURITY	1 2 3 4 5 6 7 8 9
PLANT HEIGHT	162 cm
LODGING RESISTANCE	1 2 3 4 5 6 7 8 9
STEM STIFFNESS	1 2 3 4 5 6 7 8 9
POD SHATTERING RESISTANCE	YES
PHOMA RESISTANCE	1 2 3 4 5 6 7 8 9
LIGHT LEAF SPOT RESISTANCE	1 2 3 4 5 6 7 8 9

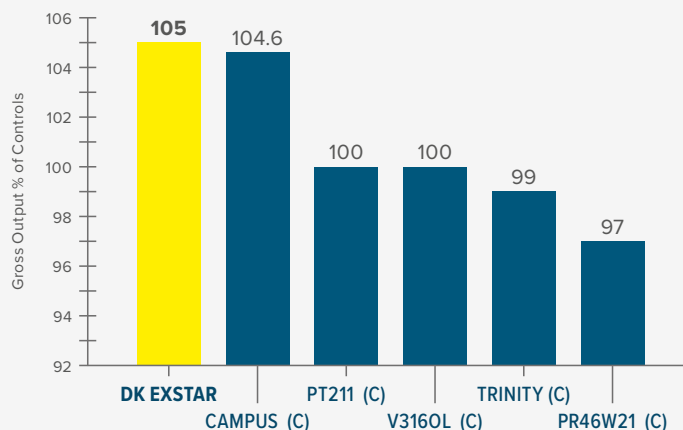
AHDB Recommended List 2018/19 Table 13 available from <https://cereals.ahdb.org.uk/varieties/ahdb-recommended-lists.aspx>

VARIETY BENEFITS

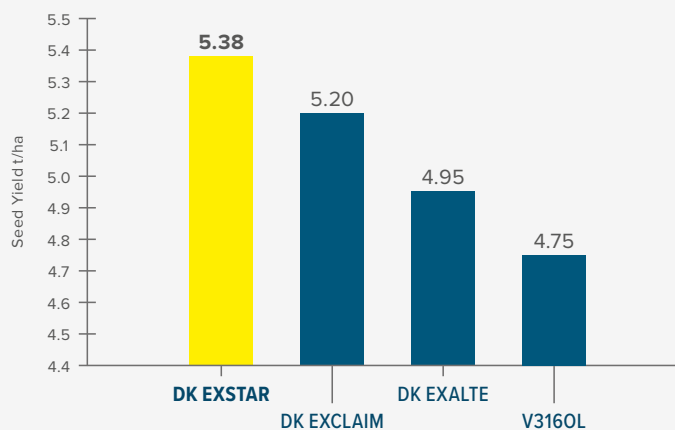
- 1 Medium - Rapid Autumn growth habit - suitable for early drilling to early September
- 2 Very good combined Stem Canker and Light Leaf Spot Resistance
- 3 Stiff Stemmed at harvest

GROSS OUTPUT

AHDB RECOMMENDED LIST 2018/19 - CANDIDATE VARIETIES GROSS OUTPUT



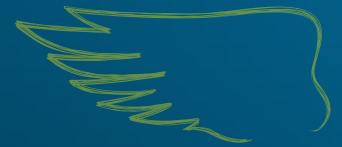
MONSANTO UK UNTREATED BREEDING TRIALS HARVEST 2017



Source: AHDB Recommended List 2018/2019 - Table 15 - Candidate Varieties, (C) denotes Control Variety. Data available from <https://cereal.ahdb.org.uk>

Source: Extract from Monsanto UK Ltd Untreated Breeding Trials - 4 sites in UK

Contact us at uk.dekalb@monsanto.com or learn more at dekalb.co.uk



KEY TRAITS



VIGOROUS ESTABLISHMENT

Proven ability to establish robust, well-rooted plants that are best able to cope with challenging UK conditions.



POD SHATTER RESISTANCE

Genetic resistance that minimises yield loss and volunteer issues caused by seed-shedding up to and during harvest.



DOUBLE PHOMA RESISTANCE

The combination of the RLM7 gene and Polygenic resistance provides outstanding, durable resistance to Phoma Stem Canker and flexibility in fungicide application.



GOOD LIGHT LEAF SPOT RESISTANCE

Solid polygenic resistance providing a good level of protection from Light Leaf Spot the 2nd most important OSR disease.

RECOMMENDATIONS

Seed rate should target an even plant stand of 25-30 plants/m² in spring.

Ensure the Green Area Index is accurately determined at the start of spring growth to guide appropriate nitrogen rates for optimal canopy size. Lodging risk with DK EXSTAR is low.

Light Leaf Spot should be monitored but strong resistance reduces the risk of severe infections.

BREEDER'S VIEW

“DK EXSTAR combines high yields and oil content with the best agronomy package ever seen in a mainstream OSR variety. Along with pod shatter resistance, this variety has a ‘9’ rating for lodging resistance and ‘8’ ratings for both stem canker and light leaf spot. AHDB have chosen this variety as an RL candidate for the whole of the UK.”



MATTHEW CLARKE

Contact our National Account Managers, tom.chillcott@monsanto.com, 07976 397300,
lizzie.matthews@monsanto.com, 07918 622318
or our Technical Development and Agronomy representative,
william.vaughan-france@monsanto.com, 07768 507866

or learn more at dekalb.co.uk