

The seed with speed!



CAMPUS



Oilseed Rape
Variety Type: Conventional

- Very vigorous autumn growth
- Consistent high gross output and good agronomics
- Excellent tolerance to verticillium stem stripe

Campus is a very popular variety on farm and continues to give high gross output across all regions and different soil types. During its lifetime its been grown over more than 500,000 hectares - thats nearly enough to plant up the Yorkshire dales (other national parks are available!)

With no major weaknesses, Campus has good disease scores with a 6 for light leaf spot and stem canker, so is suitable for all regions, giving a good level of resistance to both major diseases.

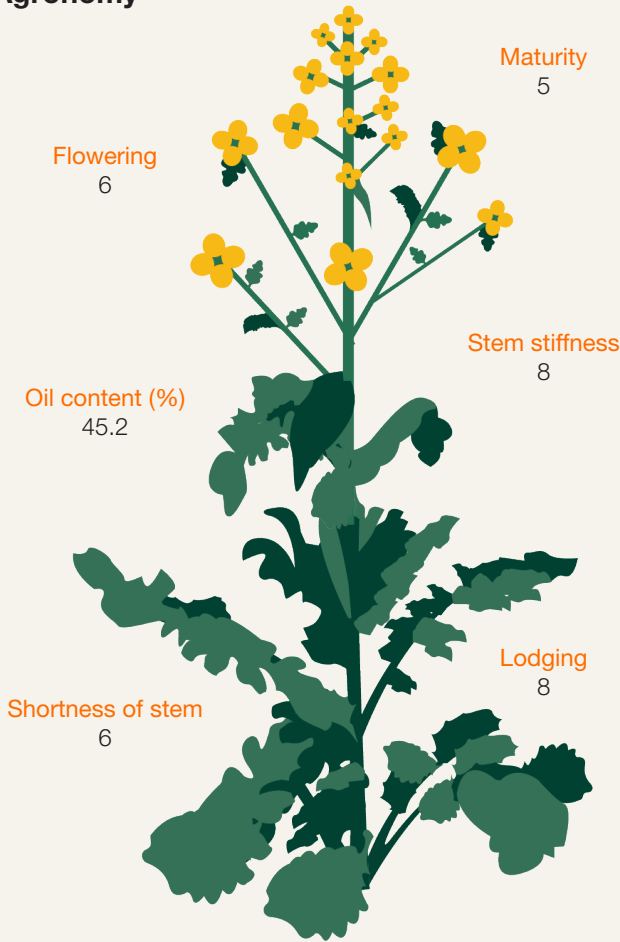
It performs well in trials where verticillium stem stripe has been found and is one of the standards in the KWS verticillium tests.

It's faster than the flea beetle and always delivers more than it says on the tin!

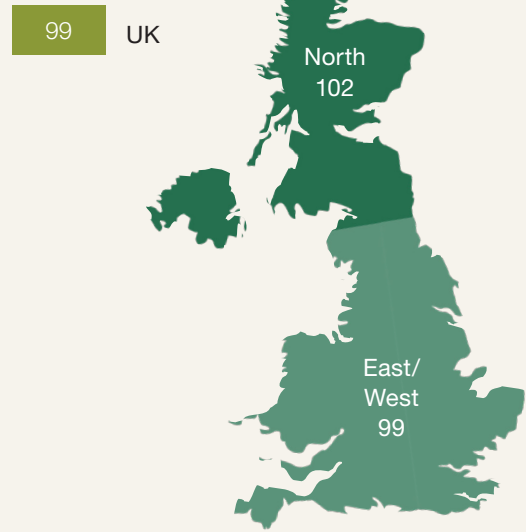


CAMPUS in a nutshell

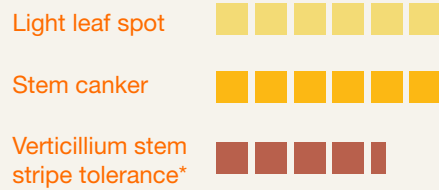
Agronomy



Yield (% controls)

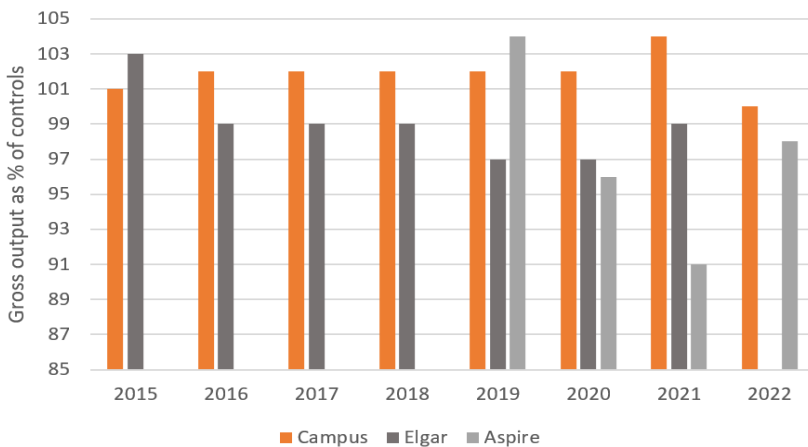


Disease Resistance



Data sources: AHDB Recommended List, disease resistance score 0-9
 * KWS Internal scoring (out of 5) for verticillium stem stripe tolerance
 Data source AHDB Recommended List Trials Oilseed Rape Harvest 2022

Why you should grow CAMPUS



Data source East/West Regional Data
 AHDB Recommended List Trials Oilseed Rape Harvest 2022

KWS Technical Specialist, Olivia Potter's View:

"A long established variety that has found favour on farm for many years – no longer listed but still competing well with newer introductions. Well-regarded for its consistency in performance and general all round package."