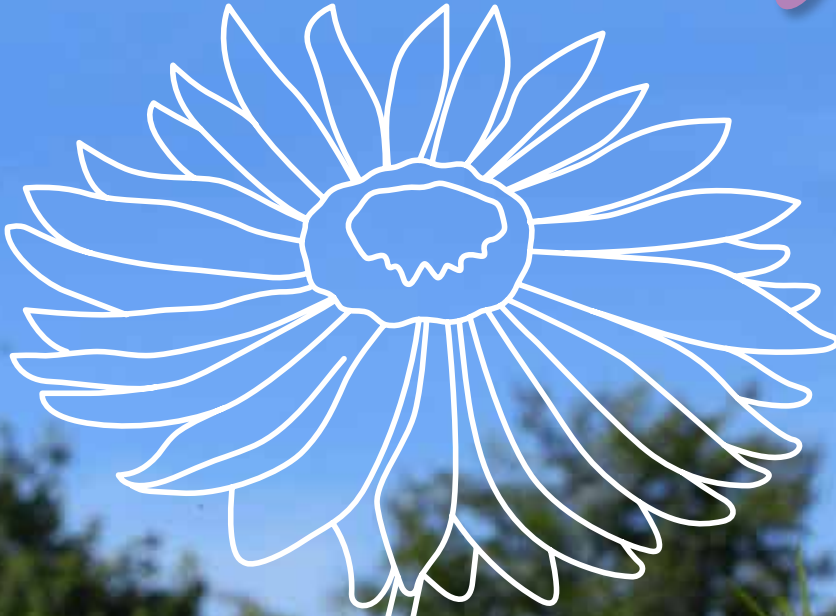


Colour **BOOST**



Colour **BOOST** *High Impact*

The Colour Boost range from DLF has been designed for maximum floral impact, incorporating both wild flower and garden flowering species. Colour Boost mixtures establish rapidly to deliver a dazzling floral display throughout the year whilst providing welcome food and shelter for wildlife.

Add colour, biodiversity and interest to your space with Colour Boost.

Colour Boost from DLF

In order to meet with the increasing demand for conservation mixtures, DLF has utilised in-house research and production facilities to formulate a number of high-quality, maximum-impact mixtures designed for amenity spaces. Within the Colour Boost range is a mixture to suit most situations not only improving visual merit, but restoring critical habitats for insect, small mammal and bird populations.

Only the best quality varieties are selected to deliver consistent results, strong visual impact and bring benefit to the immediate environment. Our experienced team is on hand

to provide advice on mixture selection and the ongoing maintenance of your space.

Why choose Colour Boost mixtures?

Flowering species have long played a key role in landscaping and development projects, bringing biodiversity to urban environments, as well as domestic or public green spaces. The inclusion of Colour Boost is a great step in improving levels of engagement and interaction with the environment.



Amenity Flower Mixtures

Colour Boost will satisfy the desire to bring aesthetic appeal to public spaces, while providing valuable habitat and a source of food to a rich variety of wildlife. For butterflies, bees and other pollinators they provide a valuable source of pollen and nectar at a time when many areas of their natural environment are under threat.

- Easy to grow, with relatively low levels of input required throughout the season
- Cost-effective way of improving the aesthetic appeal of a space
- Robust, fast-flowering mixtures with long-lasting results
- Improve engagement and interaction with the environment
- Reduce water and chemical consumption
- Improve biodiversity and create habitats for wildlife



How to optimise results from the Colour Boost range

Sowing of Colour Boost should ideally take place in the spring, when the soil is warm and moist enough to encourage germination. Late March or early April are optimal, however late spring frosts should be avoided. Sowing can then take place right through until the end of June.

Mixtures are tolerant of a wide variety of soil types, making them suited to a range of sites including golf courses, parks & public spaces, grounds, gardens and highways.

Try to avoid shaded areas – most species within the Colour Boost mixtures prefer full, or at least half, sun. They will also prefer soils that can retain some moisture. Land should also be avoided that is susceptible to weed ingress such as landfills or old vacant areas.

For further information on how to sow and maintain Colour Boost, see page 14.

Contents

Colour Boost Testimonial	<i>Colour Boost at Wildheart Animal Sanctuary</i>	4
Carnival	<i>A stunning celebration of bright and bold annuals</i>	5
Floral Carpet	<i>Lower growing annuals to recreate a summer meadow</i>	6
Skyscraper	<i>Light the sky with high impact taller growing species</i>	7
Biodiversity	<i>Deliver colour & life with this important mix for wildlife</i>	8
Honey Bee & Butterfly	<i>A mix of flowering species popular with pollinators</i>	9
Blush	<i>Annuals to appeal to the heart, in tones of roses & red</i>	10
Classical	<i>A regal mix of beautiful blues and wonderful whites</i>	11
Chameleon	<i>Ever-changing mix for bold colour throughout the season</i>	12
Poppy	<i>100% Poppy - The epitome of remembrance & reflection</i>	13
Colour Boost	<i>Technical Guide</i>	14

DLF Colour Boost brings conservation closer to home for Wildheart Animal Sanctuary

Providing a new home, rest and rehabilitation for rescued animals from across the globe, the Wildheart Animal Sanctuary (formally the Isle of Wight Zoo) have been working on a project to support species much closer to home. With flower mixtures and support from DLF Seeds, the work at the sanctuary and at local schools has been hailed a great success - with Chief Operating Officer, Lawrence Bates noting both the improvements in bio-diversity and awareness of the issues affecting our native habitats.



Lawrence began planning the habitat creation with the help of DLF's Paul Hadley in a previous role a few years ago and saw the opportunity to resurrect it upon joining the Wildheart Animal Sanctuary in July 2019. "It can be difficult for people to understand how important our behaviour and efforts are for supporting our own native species that are under threat, when a lot of the media focus is on animals on the other side of the globe. Our vision with this project is to look at spaces closer to home, increase the bio-diversity to provide habitats, shelter and food for invertebrates which, in turn, helps animals further up the food chain."

"Paul visited the island and advised on the most suitable species for our new flower meadow on site, but also what would work for projects at some local schools, which weren't going to be maintained by experts!" Selected were *Carnival*, a mixture containing quick-to-establish, high impact annuals and *Chameleon*, comprising of over 40 different species and subspecies, the appearance of which is constantly changing throughout the growing season.

Four flower meadows were sown at the schools on the island prior to the lockdown in March 2020, with the Sanctuary's own meadow then planted in June 2020. "The result from these two Colour Boost mixtures was phenomenal! Not only did the students benefit from the educational programme around wild flowers and conservation, but it completely transformed previously neglected areas of the school sites, and our own site, with hardy blooms that created a dazzling, long-lasting display of colour."

"We received so many lovely comments from Head Teachers with numerous other schools now wanting to get involved. We're also talking to local churches and a number of businesses through the Green Impact Group about new sponsored plots of land." Lawrence concludes, "The programme is growing fast and the impact this will have on the wildlife is exponential! Without DLF and their ongoing support, the project wouldn't have got off the ground."



WILDHEART
TRUST



Carnival

A stunning celebration of bright and bold annuals

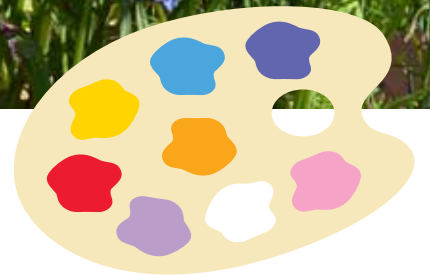


COMMON NAME	COLOURS
Paper Daisy	White/Pink/Purple
Pheasant's Eye	Red/Orange
Pot Marigold	Red/Orange/Yellow
Cornflower	Blue/Pink/White
Cosmos	Pink/Purple
Painted Daisy	Red/Orange/Pink/Yellow
Dwarf Morning Glory	Blue/Purple/Pink/White
Chinese Forget-me-not	Blue
California Poppy	Multi-colour mix
Fineflower	Blue/Pink
Farewell To Spring	Pink/Red/White
Baby's Breath	Red/White
Candytuft	White/Blue/Pink/Purple
Love-in-a-Mist	Blue/Pink/Purple/White
Corn Poppy	Red



Carnival

Designed to create a robust and attractive display in any park, public open space or golf course. This flower mixture will provide a dazzling annual display. Quick to establish with a long flowering period from eight weeks after sowing up until the first frosts.



Carnival colour palette

Sowing Rate
3-5g/m²

Jan	Feb	Mar	Apr	May	Jun	Jul	Aug	Sep	Oct	Nov	Dec
					Flowering Period						

Carnival pack sizes: 50g tin, 1kg & 10kg bags



Floral Carpet

Lower growing annuals to recreate a summer meadow



COMMON NAME	COLOURS
Sweet Alyssum	Lilac/White
Dwarf Morning Glory	Blue/Purple/Pink/White
Cornflower	Blue/Pink/White
California Poppy	Orange/Yellow
Farewell To Spring	Pink/Red/White
Virginia Stocks	Lilac/Pink/White
Flax	Blue/Red
Love-in-a-Mist	Blue/Pink/Purple/White
Mexican Marigold	Orange/Red
China Aster	Multi-colour mix
Pot Marigold	Orange/Yellow
Candytuft	Blue/Pink/Purple/White
Lobelia	Multi-colour mix
Baby Blue Eyes	Blue
Phlox Drummondii	Multi-colour mix



Floral Carpet colour palette

Sowing Rate
3-5g/m²



Floral Carpet

Lower growing seasonal annuals mixture, designed to create a robust and attractive display in areas where final growing height is of paramount importance. This is particularly relevant when sowing near visibility splays and sight lines on road junctions. This lower growing mixture will provide rich blooms throughout the season, perfect for enhancing any street scene. Quick to establish with a long flowering period from eight weeks after sowing up until the first frosts.

Jan	Feb	Mar	Apr	May	Jun	Jul	Aug	Sep	Oct	Nov	Dec
					Flowering Period						

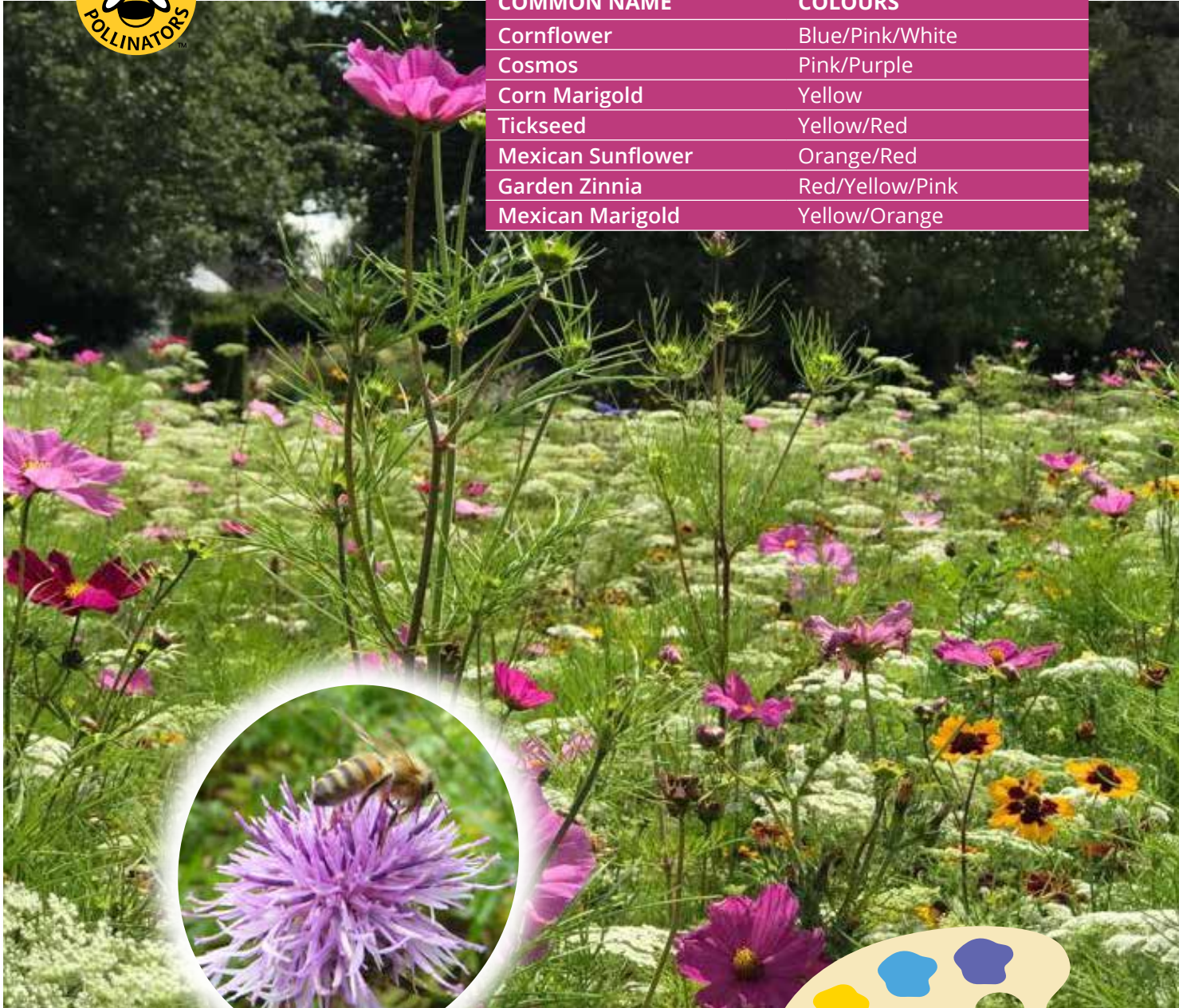
Floral Carpet pack sizes: 1kg / 10kg bag

Skyscraper

Light the sky with high impact taller growing species



COMMON NAME	COLOURS
Cornflower	Blue/Pink/White
Cosmos	Pink/Purple
Corn Marigold	Yellow
Tickseed	Yellow/Red
Mexican Sunflower	Orange/Red
Garden Zinnia	Red/Yellow/Pink
Mexican Marigold	Yellow/Orange



Skyscraper

A taller growing mixture containing classics such as Cosmos and Zinnia. Created for areas where a larger or more open surrounding environment requires a taller growing mixture to deliver the same impact. The taller more robust nature of this mixture also provides fantastic shelter and a habitat for small mammals, invertebrates and pollinating insects.



Skyscraper colour palette

Sowing Rate
3-5g/m²

Jan	Feb	Mar	Apr	May	Jun	Jul	Aug	Sep	Oct	Nov	Dec
					Flowering Period						

Skyscraper pack sizes: 1kg / 10kg bag

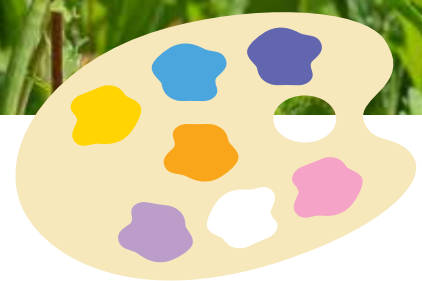


Biodiversity

Deliver colour and life with this important mix for wildlife



COMMON NAME	COLOURS
Perennials:	
Alpine Forget-me-not	Blue/Pink
Yarrow	White
Musk Mallow	Pink
Sweet William	White/Pink/Purple
Purple Coneflower	Purple
Meadowsweet	White
Shasta Daisy	White/Yellow
Soapwort	Pink
Annuals:	
Pot Marigold	Yellow/Orange
Corn Cockle	Mauve
Common Bugloss	Blue
Biennials:	
Wallflower	Orange/Yellow
Vipers Bugloss	Blue
Foxglove	Purple
Black Medick	Yellow
Canterbury Bells	Blue



Biodiversity

A blend of seasonal Annuals, Biennials and Perennials designed to attract a host of varied fauna including pollinating insects. The composition of species is wide and ensures a good adaptability to different growing conditions and good colour during the first year. The colour scheme of the mix changes during the season depending on which species are in bloom at the time.

Biodiversity colour palette

Sowing Rate
3-5g/m²



Jan	Feb	Mar	Apr	May	Jun	Jul	Aug	Sep	Oct	Nov	Dec
					Flowering Period						



Biodiversity pack sizes: 1kg / 10kg bag

Honey Bee & Butterfly

A mix of flowering species popular with pollinators



COMMON NAME	COLOURS
Common Bugloss	Blue
Cornflower	White/Blue/Pink/Red
Cosmos	Pink/Purple/Orange
California Poppy	Multi-colour mix
Dwarf Sunflower	Yellow
Farewell To Spring	Pink/Red/White
Black-eyed Susan	Yellow/Red
Garden Zinnia	Red/Yellow/Pink
Shasta Daisy	White/Yellow
Tickseed	Yellow/Red
Foxglove	Purple
Sweet William	White/Pink/Purple
Perennial Flax	Blue

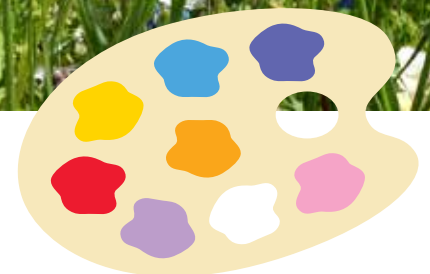


Honey Bee & Butterfly

Designed specifically with key pollinators in mind, a really attractive mixture doing a vital job in providing a nectar source for our bee population and other pollinating insects. This mixture will provide a spectacular display in year one, with species such as Foxglove and Sweet William flowering in year two if the mixture is left.

Jan	Feb	Mar	Apr	May	Jun	Jul	Aug	Sep	Oct	Nov	Dec
Flowering Period											

Honey Bee & Butterfly pack sizes: 1kg / 10kg bag



Honey Bee & Butterfly colour palette

Sowing Rate
3-5g/m²

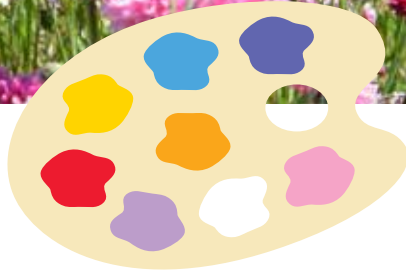


Blush

*Annuals to appeal to the heart,
in tones of roses & red*



COMMON NAME	COLOURS
Summer Pheasant's Eye	Dark Red
Corn Cockle	Purple
Love-lies-bleeding	Red
China Aster	Pink/Purple
Cornflower	Blue
Spider Flower	Pink
Garden Cosmos	Pink
Forking Larkspur	Dark Blue/Purple
California Poppy	Red/Orange/Yellow
Strawberry Fields Globe	Red
Showy Baby's Breath	White/Pink
Pink Sunray	Pink
Rose Mallow	Pink
Red Flax	Red
Night Scented Stock	Lilac
Marvel of Puru	Yellow/Pink/White
Corn Poppy	Red
Wild Clary	Purple
Cowherb	Pink
Youth-and-Age	Pink/Purple/Yellow/Orange



Blush

Pale pinks through to deep reds, Blush provides a beautifully warm mix of flowers from this colour palette. Designed for great succession flowering from late spring until well into the autumn.



**Blush
colour palette**

**Sowing Rate
3-5g/m²**



Jan	Feb	Mar	Apr	May	Jun	Jul	Aug	Sep	Oct	Nov	Dec
Flowering Period											



Blush pack sizes: 1kg / 10kg bag

Classical

A regal mix of beautiful blues and wonderful whites



COMMON NAME	COLOURS
Common Bugloss	Blue
Cornflower	
Larkspur	
Dragonhead	
Purple Bugloss	
Flax	
Love-in-a-mist	
Blue Tansy	
Annual Sage	
Common Vetch	
Sweet Alyssum	
Queen Anne's Lace	
Cornflower	White
Creeping Daisy	
Garden Cosmos	
California Poppy	
Candytuft	
Love-in-a-mist	
Soapwort	
Common Zinnia	



Classical

Deep blues through to pure whites gives this trusted colour combination an everlasting appeal. This mixture works especially well in a more formal setting, or providing the transition between a formal and informal landscape.



Classical colour palette

Sowing Rate
3-5g/m²

Jan	Feb	Mar	Apr	May	Jun	Jul	Aug	Sep	Oct	Nov	Dec
						Flowering Period					

Classical pack sizes: 1kg / 10kg bag



Chameleon

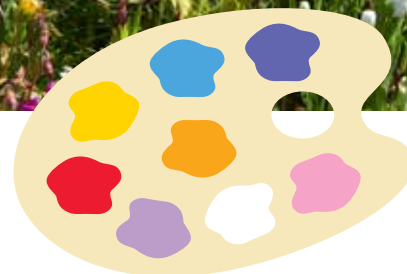
Ever-changing mix for bold colour throughout the season



COMMON NAME	COLOURS
Fossflower	Blue
Sweet Alyssum	Purple/Pink
Love-lies-bleeding	Red
Bishop's Weed	White
Dill	Yellow
Snapdragon	Yellow/Pink/White
Borage	Blue
Pot Marigold	Orange
China Aster	Pink/Purple
Safflower	Yellow/Orange
Cornflower	Blue
Mediterranean Stock	Pink/Lilac
Painted Daisy (Tricolour)	Pink/Yellow/White
Elegant Clarkia	Pink/Purple
Purple Chinese Houses	Purple
Dwarf Morning Glory	Blue/White/Yellow
Garden Cosmos	Pink
Chinese Hound's Tongue	Blue
Garden Dahlia	Pink/Purple
Doubtful Knight's Spur	Blue/Pink/White
Sweet William	Red/White
Purple Viper's Bugloss	Purple
Foothill Poppy	Yellow
Farewell to Spring	Pink/White
Showy Baby's Breath	Pink
Common Sunflower	Yellow
Strawflower	Yellow/Pink/White
Candytuft	White
Balsam	Pink/Lilac
Rose Mallow	Pink
Moroccan Toadflax	Purple
Lupin	Pink/Purple/White/Blue
Mallow Wort	Pink/White
Mayweed	White/Yellow
Hoary Stock	Pink/White/Lilac
Bells of Ireland	Green
Love-in-a-Mist	Blue/Pink/White/Purple
Yellow Fennel Flower	Yellow
Black Eyed Susan	Yellow/Brown
Cowherb	Pink
Sweet Scabious	Pink/Lilac/Purple
Starflower Pincushions	White
Monarch of the Veld	Orange/White
Youth-and-Age	Pink/Purple/Yellow/Orange

Chameleon

A brilliantly diverse mixture of over 40 species and subspecies providing a fantastic range of colours and forms. This mixture is constantly changing throughout the growing season. Summer Chameleon has been a consistent performer on our trial grounds giving a fantastic show throughout the season.



Chameleon colour palette

Sowing Rate
3-5g/m²



Jan	Feb	Mar	Apr	May	Jun	Jul	Aug	Sep	Oct	Nov	Dec
					Flowering Period						

Chameleon pack sizes: 1kg / 10kg bag

Poppy

100% Poppy - The epitome of remembrance and reflection



COMMON NAME

Field Poppy

COLOURS

Red



Poppy

Creating an evocative image in drifts of bright red. Whether it's just for show or creating a display to remember those heroes no longer with us, the simple poppy makes a great choice. Poppy can also be successfully sown in the autumn.



Poppy colour palette

Sowing Rate
1g/m²



Jan	Feb	Mar	Apr	May	Jun	Jul	Aug	Sep	Oct	Nov	Dec
					Flowering Period						

Poppy pack sizes: 1kg / 10kg bag



Where to sow Colour Boost

Colour Boost is well suited to a range of soil types and environments including golf courses, highway areas, public green spaces and gardens.

Land that is completely shaded or enclosed by trees should be avoided. Most species included in the Colour Boost mixtures require full, or at least half, sunlight to flourish. In addition, while the species selected demonstrate resistance to drought, some moisture will need to be present for them to thrive.

Spaces that are susceptible to weed ingress, such as landfills or old vacant sites, should also be avoided.

When to sow Colour Boost

The ideal time to sow Colour Boost is when the soil is warm and moist enough to promote germination – this would traditionally be in the spring. Sowing of Colour Boost is possible from the end of March or beginning of April, when the period of late spring frosts is over. Sowing can then take place until approximately the end of June depending on conditions.

How to prepare the ground for sowing

Preparing the ground is a crucial step to ensure the best results from your Colour Boost mix. Under no circumstances should seed be sown onto an area that is currently covered, such as into an existing lawn etc.

To achieve optimal germination, the soil may need to be worked, prepared and/or treated before the seed is sown. When sowing Colour Boost, the seed should be in adequate soil contact and lightly covered.

How to sow Colour Boost

Keep the seed in its original packaging at normal temperatures (5°C to 20°C) until the day you intend to sow. Shake the can or bag in order to adequately mix the seeds before sowing. Whether you are undertaking the sowing operation by hand or by machine, ensure you continue to mix the seed throughout in order to achieve an even distribution of plants. The ideal sowing method will be determined by the area being planted.

For Colour Boost mixtures, the ideal sowing rate is between 3-5g/m².

For areas under a few hundred m² hand sowing is likely to deliver the best results. For larger areas, mechanised sowing will be better suited.

Mix the Colour Boost seeds with **Rehofix Bulking Granules** at a ratio of 4 parts Rehofix to 1 part seed.



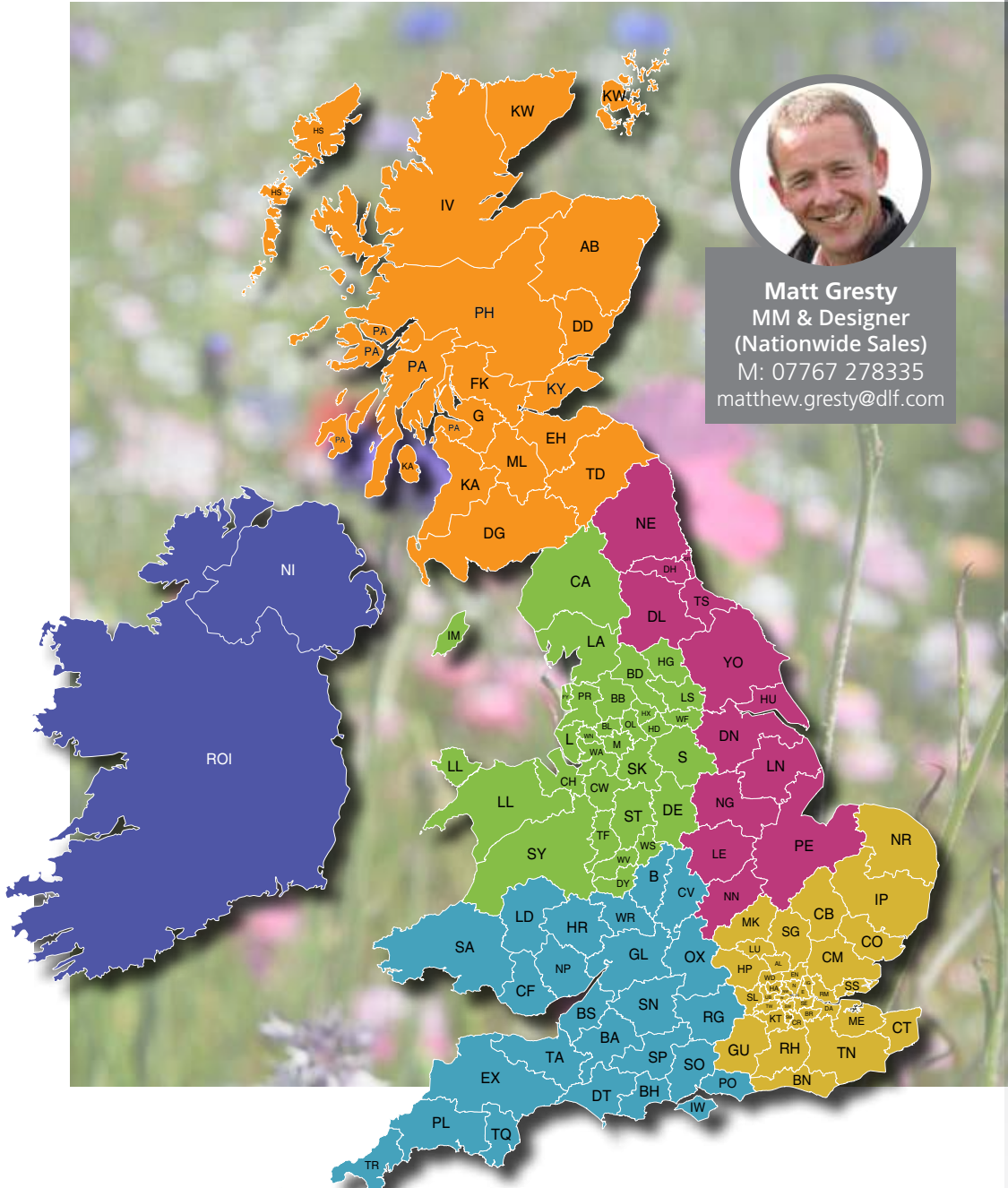
The use of a micro-granule or fertiliser applicator is recommended where possible. Ensure that the seeds are lightly covered and use a suitable roller to help achieve that desired seed contact with the soil.

Utilising a seed drill is also advised. Seed drills are typically used to sow grass or other small seeds in shallow seed beds (0.5cm). A seed drill will ensure that the Colour Boost seeds are adequately buried in the ground to help promote germination.

Colour Boost Maintenance

Colour Boost mixtures require little maintenance - they do not need watering, feeding or treating with pesticides. The small ecosystem they create when established will sustain Colour Boost species and allow them to thrive freely. For mixtures containing Biennials and Perennials such as Biodiversity and Honeybee and Butterfly that are to be kept for more than one year, cut back and collect all the top growth before the next spring. Hand weed or spot treat any undesirable species.





Matt Gresty
MM & Designer
(Nationwide Sales)
M: 07767 278335
matthew.gresty@dlf.com



Kyle Paterson
T: 01506 674812
kyle.paterson@dlf.com



Roger Peacock
M: 07801 459623
peacock@dlf.co.uk



Stuart Yarwood
M: 07801 459625
stuart.yarwood@dlf.com



Damian McAllister
M: 07774 249609
dmcallister@dlfseeds.ie



Ian Barnett
M: 07814 669085
ibarnett@dlf.co.uk



Craig Spooner
M: 07824 906933
cspooner@dlf.co.uk



HARLOW AGRICULTURAL MERCHANTS

Latchmore Bank, Little Hallingbury, Bishops Stortford, Herts, CM22 7PJ

Are your local distributor, Please contact:

Ben Freeston
01279 658313
Ben.Freeston@Harlow-ag.co.uk

Any information provided in this catalogue is given in good faith and to the best of our existing knowledge. Any advice should therefore be taken as a general guide only and not relied upon for all conditions and circumstances. We cannot accept any legal liability for information given in this publication. In any instance where there are shortages of specified species we reserve the right to substitute.

Marketed by:



© Copyright DLF Seeds 2022 - design - www.panpublicity.co.uk



DLF Inkberrow & Head Office

DLF Seeds Ltd., Thorn Farm,
Inkberrow WR7 4LJ
Telephone: 01386 791102
www.dlf.co.uk

 @DLFSEEDS_UK

DLF Edinburgh

10 Westerton Road
East Mains Industrial Estate
Broxburn West Lothian
EH52 5AU
Telephone: 01506 674800

DLF Seeds Ireland

Ballymountain,
Ferrybank, Co. Waterford
X91 V6YR Ireland
Telephone: 051-897060
Email: info@dlfseeds.ie